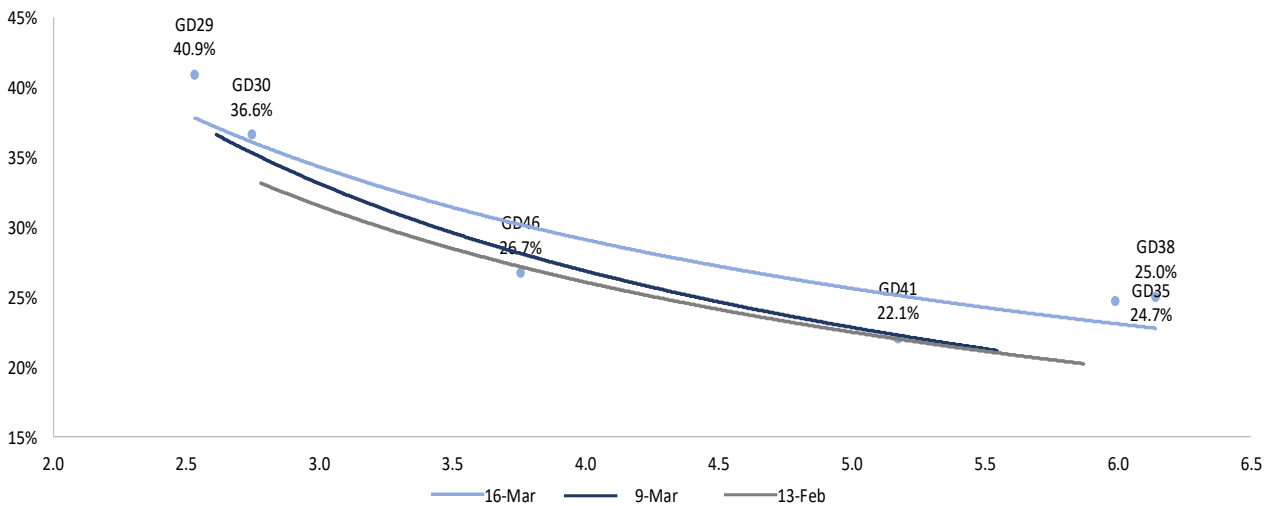


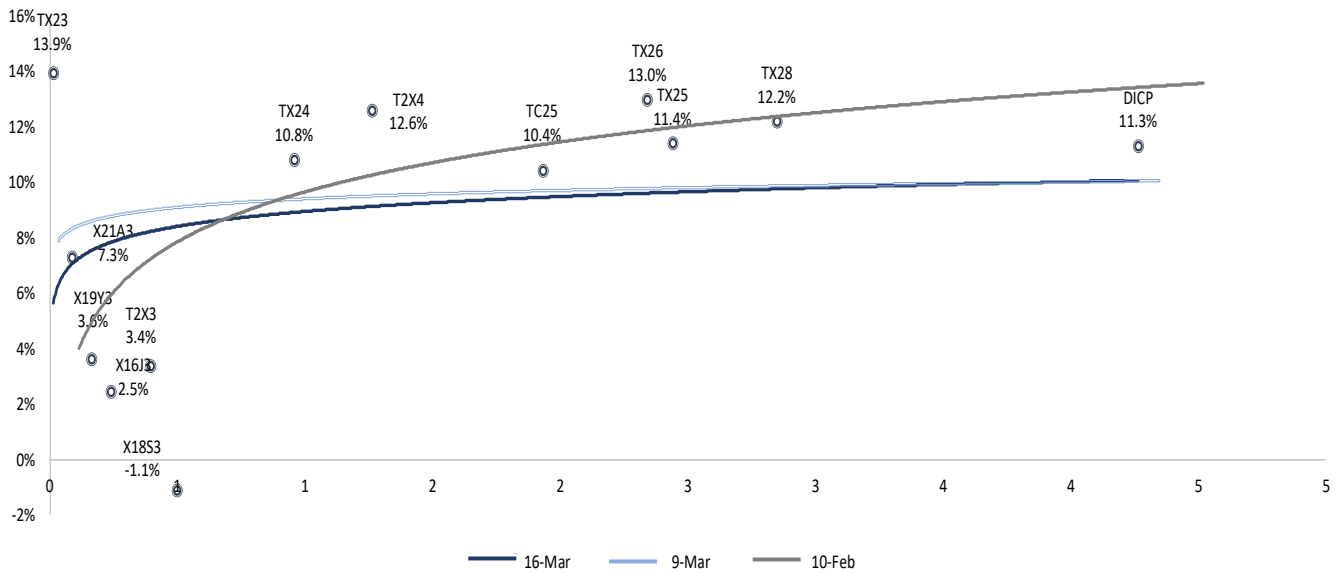
16-Mar	Ticker	Dirty Price	Clean Price	YTM	Mod. Dur	Acc. Int	Parity	Price change				Yield (bps)			
								daily change	weekly change	monthly change	YTD	daily change	weekly change	monthly change	YTD
								(1bds)	(5bds)	(22bds)		(1bds)	(5bds)	(22bds)	
Foreign Law bonds in USD								15-Mar	9-Mar	13-Feb	30-Dec	15-Mar	9-Mar	13-Feb	30-Dec
ARGENT 1 07/09/29	GD29	27.4	27.2	40.9%	2.5	0.2	27.3%	2.5%	-5.7%	-12.5%	1.8%	-67	255	605	204
ARGENT 0 1/2 07/09/30	GD30	28.6	28.5	36.6%	2.7	0.1	28.6%	2.8%	-5.4%	-12.9%	5.5%	-85	217	568	53
ARGENT 1 1/2 07/09/35	GD35	25.2	24.9	24.7%	6.0	0.3	25.1%	3.5%	-4.1%	-12.6%	-1.6%	-40	100	281	110
ARGENT 3 7/8 01/09/38	GD38	30.8	30.0	25.0%	6.1	0.8	30.5%	2.2%	-6.9%	-10.9%	-3.3%	8	205	308	168
ARGENT 3 1/2 07/09/41	GD41	27.9	27.2	22.1%	5.2	0.7	27.7%	3.1%	-4.9%	-11.4%	-1.3%	-10	135	265	97
ARGENT 1 1/2 07/09/46	GD46	25.5	25.2	26.7%	3.8	0.3	25.4%	2.8%	-5.4%	-13.5%	-1.3%	-39	165	391	147
Foreign Law bonds in EUR															
ARGENT 0 1/2 07/09/29	GE29	24.5	24.4	43.6%	2.5	0.1	24.5%	-2.0%	-8.8%	-13.6%	-1.4%	91	354	640	319
ARGENT 0 1/8 07/09/30	GE30	24.5	24.5	40.4%	2.6	0.0	24.5%	-3.0%	-8.5%	-12.6%	-0.1%	113	331	573	256
ARGENT 0 7/8 07/09/35	GE35	22.5	22.3	24.8%	5.6	0.2	22.5%	1.1%	0.3%	-9.8%	3.8%	-6	-2	202	4
ARGENT 3 01/09/38	GE38	24.8	24.2	27.9%	6.1	0.6	24.6%	-3.9%	-8.0%	-16.7%	-7.1%	139	183	409	216
ARGENT 0 7/8 07/09/46	GE46	21.0	20.8	29.5%	6.8	0.2	21.0%	-3.4%	-12.3%	-19.1%	-7.4%	109	326	543	296



16-Mar	Ticker	Dirty Price	Clean Price	YTM	Mod. Dur	Acc. Int	Parity	Price change				Yield (bps)			
								daily change	weekly change	monthly change	YTD	daily change	weekly change	monthly change	YTD
								(1bds)	(5bds)	(22bds)		(1bds)	(5bds)	(22bds)	
Local Law bonds in USD								15-Mar	9-Mar	10-Feb	30-Dec	15-Mar	9-Mar	10-Feb	30-Dec
ARGBN 1 07/09/29	AL29	25.3	25.1	44.1%	2.6	0.2	25.2%	3.3%	-2.6%	-14.2%	-6.5%	-82	156	711	539
ARGBN 0 1/2 07/09/30	AL30	25.2	25.1	41.4%	2.7	0.1	25.1%	3.8%	-3.3%	-14.2%	5.3%	-115	164	674	101
ARGBN 1 1/2 07/09/35	AL35	24.7	24.4	25.1%	5.4	0.3	24.6%	3.4%	-3.8%	-14.4%	-5.1%	-37	98	322	178
ARGBN 3 7/8 01/09/38	AE38	29.2	28.4	26.2%	4.4	0.8	29.0%	5.7%	0.4%	-9.1%	-20.9%	-62	54	281	577
ARGBN 3 1/2 07/09/41	AL41	25.8	25.1	23.6%	5.2	0.7	25.6%	7.5%	0.2%	-11.3%	-12.9%	-84	49	281	326
Dollar linked bonds (*)															
ARGBND 0.3 04/28/23	TV23D	20,150.0	20,126.0	7.0%	0.1	24.0	95.3%	0.6%	2.1%	7.2%	12.6%	-379	-1555	-3492	-3780
ARGBND 0 07/31/23	T2V3D	20,350.0	20,350.0	-0.8%	0.4	0.0	92.4%	1.3%	5.5%	9.1%	15.6%	-350	-1505	-2110	-2915
ARGBND 0.4 04/30/24	TV24D	19,774.0	19,742.4	2.7%	1.1	31.6	94.2%	0.6%	2.6%	20.8%	28.5%	84	185	-891	-2566

(*) Prices are in Pesos. YTM and Mod. Dur assume the latest spread between the official FX and Blue Chip

16-Mar	Ticker	Dirty Price	Clean Price	YTM	Mod. Dur	Acc. Int	Parity	Price change				Yield (bps)				
								daily change (1bds)	weekly change (5bds)	monthly change (22bds)	YTD	daily change (1bds)	weekly change (5bds)	monthly change (22bds)	YTD	
CER-Linked bonds								15-Mar	9-Mar	10-Feb	30-Dec	15-Mar	9-Mar	10-Feb	30-Dec	
	CER Index (-8 bds)		82.2					0.6%	1.5%	6.6%	13.8%					
	Lecer Apr 23	X21A3	193.5	193.5	7.3%	0.1	0.0	96.9%	0.8%	1.6%	6.8%	13.2%	-100	-17	295	714
	Lecer May 23	X19Y3	185.7	185.7	3.6%	0.2	0.0	95.2%	0.4%	1.5%	7.0%	14.7%	130	34	-29	6
	Lecer Jun 23	X16J3	147.3	147.3	2.5%	0.2	0.0	77.3%	0.9%	2.4%	7.7%	16.6%	-99	-353	-248	-425
	Lecer Sep 23	X18S3	139.0	139.0	-1.1%	0.5	0.0	35.7%	4.1%	5.3%	11.8%	19.5%	-689	-736	-844	-737
	Boncer Mar 23 1.4%	TX23	407.4	404.6	13.9%	0.0	2.8	97.1%	0.7%	1.7%	6.8%	14.6%	11	-58	781	756
	Boncer Aug 23 1.5%	T2X3	367.5	366.9	3.4%	0.4	0.6	98.7%	0.7%	3.5%	8.0%	16.4%	-11	-483	-259	-231
	Boncer Mar 24 1.5%	TX24	372.5	369.5	10.8%	1.0	3.0	88.6%	0.1%	0.8%	9.6%	15.6%	58	77	-196	-2
	Bocon Mar 24 2%	PR13	784.8	784.6	-14.9%	0.7	0.2	108.2%	2.7%	-3.8%	-5.0%	-2.1%	-340	-318	-570	-1148
	Boncer Jul 24 1.5%	T2X4	266.5	265.8	12.6%	1.3	0.7	86.1%	-0.2%	-0.9%	9.4%	15.0%	71	195	-128	116
	Boncer Apr 25 4%	TC25	800.0	785.6	10.4%	1.9	14.4	77.0%	1.2%	0.4%	12.9%	15.7%	-30	55	-277	-64
	Boncer Nov 26 2%	TX26	281.3	278.6	13.0%	2.3	2.7	75.1%	-1.5%	-1.4%	7.3%	16.1%	94	127	13	7
	Boncer Nov 28 2.3%	TX28	272.5	269.5	12.2%	2.8	3.0	72.5%	-0.1%	-0.1%	7.4%	15.7%	28	59	4	8
	Boncer Sep 25 1.8%	TX25	140.0	138.8	11.4%	2.4	1.2	80.5%	0.0%	-0.8%	14.5%	27.9%	29	95	-259	-391
	Discount ARS	DICP	5673.0	5580.0	11.3%	4.3	93.0	45.6%	0.5%	-1.5%	-1.3%	13.7%	3	70	177	18
	Par ARS	PARP	2745.0	2697.8	9.8%	11.7	47.2	33.0%	1.8%	1.8%	-2.4%	23.9%	-13	-3	101	-90

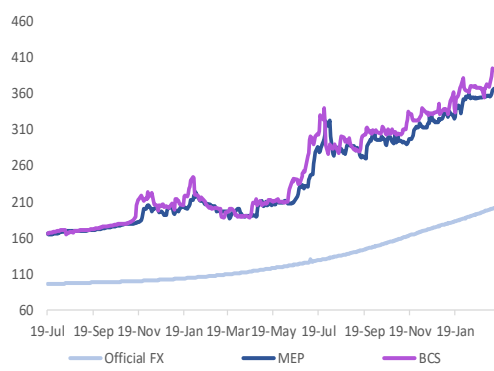


16-Mar	Ticker	Dirty Price	Clean Price	AVG Monthly Return	YTM	Issue Date	Maturity (Years)	Price change				Yield change (bps)				
								daily change (1bds)	weekly change (5bds)	monthly change (22bds)	YTD	daily change (1bds)	weekly change (5bds)	monthly change (22bds)	YTD	
ARS bonds								15-Mar	9-Mar	10-Feb	30-Dec	15-Mar	9-Mar	10-Feb	30-Dec	
	LEDES 31 Mar 23	S31M3	97.5	97.5	6.6%	103.0%	11/23/2022	0.04	0.5%	1.6%	7.1%	16.3%	2,482	1,852	2,769	2,390
	LEDES 28 Apr 23	S28A3	91.7	91.7	8.5%	91.1%	7/15/2022	0.12	0.5%	1.5%	7.1%	15.6%	617	497	907	914
	LEDES 31 May 23	S31Y3	85.2	85.2	9.1%	92.0%	12/30/2022	0.21	0.7%	1.1%	6.9%		243	476	562	
	LEDES 30 Jun 23	S30J3	79.6	79.6	9.3%	93.9%	1/6/2023	0.29	1.2%	1.0%	6.5%		-68	383	468	
	ARGTES 17 Oct 23	TO23	75.4	68.6	7.6%	129.9%	10/17/2016	0.59	1.7%	0.1%	7.0%	11.6%	2,734	3,424	3,338	4,263
	ARGTES 17 Oct 26	TO26	30.3	23.7	4.7%	87.9%	10/17/2016	3.59	-0.2%	1.0%	3.4%	15.5%	103	72	355	126

Ramiro Blazquez	Bruno Gennari	Juan Sola	Federico Cuba	Agustín Costa
Head of Research & Strategy	Senior Strategist	Senior Economist	Senior Economist	Analyst
rblazquez@banctrust.com.ar	bgennari@banctrust.com.ar	jsola@banctrust.com.ar	fcuba@banctrust.com.ar	acosta@banctrust.com.ar

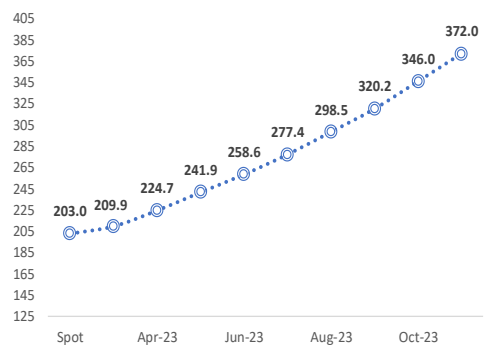
16-Mar	Ticker	Dirty Price	YTM	Spread (bps)	Average Life	Previous coupon date	Next Coupon date	Days to next coupon	Price change				Yield change (bps)					
									daily change (1bds)	weekly change (5bds)	monthly change (22bds)	YTD	daily change (1bds)	weekly change (5bds)	monthly change (22bds)	YTD		
Underlying rates									15-Mar	9-Mar	10-Feb	30-Dec	15-Mar	9-Mar	10-Feb	30-Dec		
	Monetary Policy		75.0%															
	Badlar (avge last 5bd)		70.6%											50	25	69	175	
Sovereign																		
	ARGBAD Float 04/18/24	TB24	108.00	109.1%	3,853	1.1	18-Jan-23	18-Apr-23	33	0.0%	0.0%	4.9%	0.8%	169	346	572	-812	
Provincial																		
	City of BA 2024	BDC24	116.72	93.9%	2,333	1.0	29-Dec-22	29-Mar-23	13	0.6%	1.5%	7.5%	12.3%	-170	-96	-211	547	
	City of BA 2028	BDC28	102.40	99.8%	2,925	4.9	22-Feb-23	22-May-23	67	0.2%	0.6%	-12.1%	-3.4%	46	58	351	175	
	Prov. of BA 2024	PBY24	100.90	114.5%	4,395	1.2	16-Feb-23	16-May-23	61	1.9%	0.4%	-11.1%	5.1%	-337	231	174	-1,860	
	Prov. of BA 2025	PBA25	100.85	88.7%	1,815	2.1	12-Jan-23	12-Apr-23	27	0.3%	-0.1%	2.2%	-5.0%	32	157	539	438	

Exchange rates	Value				Variation		
	16-Mar	15-Mar	9-Mar	13-Feb	15-Mar	9-Mar	13-Feb
Official FX (MAE)	202.9	202.6	200.4	191.6	0.2%	1.3%	5.9%
MEP USD	388.8	383.4	375.4	355.0	1.4%	3.6%	9.5%
Blue Chip Swap (BCS)	401.7	396.2	384.2	368.8	1.4%	4.6%	8.9%



Spread MEP vs Official FX	Spread (in %)				Change		
	16-Mar	15-Mar	9-Mar	13-Feb	15-Mar	9-Mar	13-Feb
Spread MEP vs Official FX	91.6%	89.3%	87.4%	85.2%	2.3%	4.2%	6.4%
Spread BCS vs Official FX	98.0%	95.6%	91.7%	92.4%	2.4%	6.2%	5.5%

Rofex Curve	Value				Pctg. Change		
	16-Mar	15-Mar	9-Mar	13-Feb	15-Mar	9-Mar	13-Feb
Spot	203.0	202.5	200.4	191.6	0.2%	1.3%	5.9%
Mar-23	209.9	209.9	209.6	210.9	0.0%	0.2%	-0.5%
Apr-23	224.7	224.4	222.7	223.0	0.1%	0.9%	0.8%
May-23	241.9	241.8	238.3	238.1	0.0%	1.5%	1.6%
Jun-23	258.6	257.8	253.7	253.0	0.3%	1.9%	2.2%
Jul-23	277.4	277.2	271.4	268.6	0.1%	2.2%	3.3%
Aug-23	298.5	298.7	290.2	287.0	-0.1%	2.9%	4.0%
Sep-23	320.2	319.8	311.5	305.0	0.1%	2.8%	5.0%
Oct-23	346.0	345.0	335.0	322.5	0.3%	3.3%	7.3%
Nov-23	372.0	371.0	360.0	340.0	0.3%	3.3%	9.4%



30-day implicit yield	30-day implicit yield				Change (Bps)		
	16-Mar	15-Mar	9-Mar	13-Feb	15-Mar	9-Mar	13-Feb
Mar-23	84.6%	84.3%	76.8%	78.2%	25	773	636
Apr-23	89.5%	88.1%	79.7%	77.0%	139	986	1256
May-23	87.2%	87.0%	78.7%	76.3%	19	848	1092
Jun-23	86.3%	85.1%	78.6%	76.2%	119	767	1004
Jul-23	86.1%	85.9%	79.4%	75.6%	19	670	1055
Aug-23	86.8%	86.9%	79.7%	76.4%	-8	703	1039
Sep-23	87.5%	87.2%	81.6%	76.7%	28	591	1077
Oct-23	88.0%	87.5%	82.2%	75.3%	50	589	1274
Nov-23	88.5%	88.0%	83.1%	74.3%	44	533	1411

